

HVLS FANS



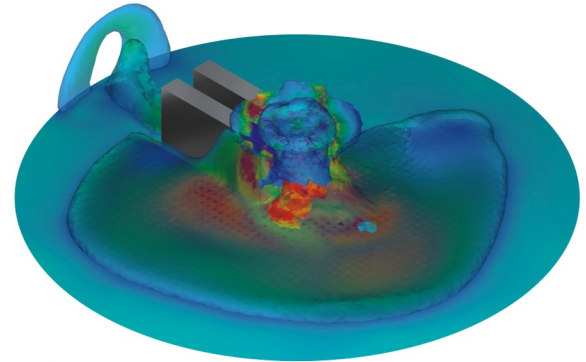
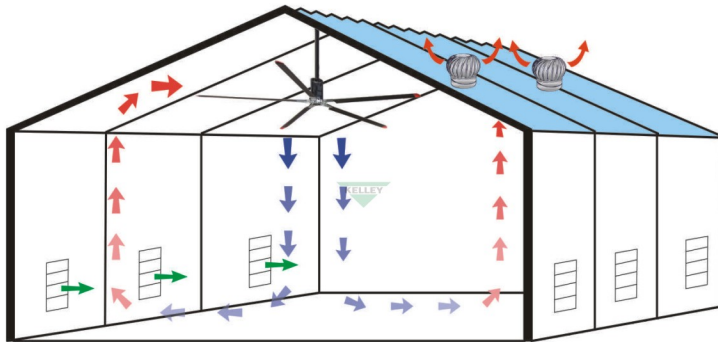
Kelley India is a wholly owned subsidiary of 4Front Engineered Solutions, Dallas, Tx, USA (Part of USD 9.0 Billion ASSA ABLOY Group). Kelley India engineers are trained at the US Headquarters and they use their expertise to help make work places safer, more productive and increase energy saving for customers in variety of applications. Its pan India network ensures seamless and prompt after-sales support.

Kelley drew the blueprint for the loading dock industry with the invention of the first Counter-Balanced Dock Leveler in 1953 in the USA. Through passion for engineering, Kelley evolved to produce a comprehensive portfolio of solutions, which include a line of Air-Powered, Hydraulic and Mechanical Dock Levelers, HVLS Fans, vehicle restraints, integrated control systems, ergonomic lift tables, energy-saving dock seals and shelters, which are manufactured in seven state-of-the-art facilities globally.

Kelley and Serco High Volume Low Speed Fan “the HVLS Fan” is designed to provide an energy-efficient solution for large spaces almost noiselessly. HVLS fans require much less energy than traditional HVAC systems and provide year-round comfort.

Industrial HVLS Fans

Kelley and Serco Industrial High Volume Low Speed (HVLS) Fans circulate air efficiently which positively impacts many factors in your facility. The airfoil style blade design produces a massive, cylindrical column of air that flows down to the floor and outward in all directions, creating a horizontal floor jet that consistently circulates air in large spaces. This “horizontal floor jet” pushes air to a greater distance before it is pulled back vertically towards the blades. The greater the down flow, the greater the air circulation and resulting benefits. In the colder months, fans can be run in reverse direction to circulate the hot air trapped at ceiling level known as “destratification”.



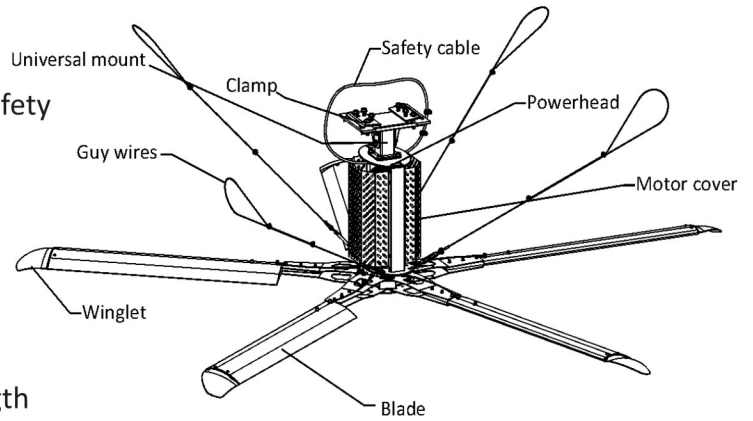
Typical Airflow Diagrams for an HVLS Fan

Features	Specifications	Benefits
Sizes	- Diameter: 8 to 24 Feet	- Ideally suitable for different sized facilities
Motor Power	- For Fan Dia. 8’-20’: 1.5 HP. - For Fan Dia. 24’: 2.0 HP. (All Motors are 3ph, IE-3 Design)	- Low power consumption leading to very low operating cost. - Supports LEED rating
Area Coverage	- Upto 30,000 sq ft with a 24’ Fan (Under ideal test conditions)	- Uniform airflow in large area requiring lesser fans - No Black Spot-Each person gets sufficient air - Unbelievably quick Return on Investment “ROI”
Noise Level	- Less than 60 dBA	- Almost noiseless operation - Improves workmen concentration - Better workmen productivity
Weight	- 24 feet HVLS Fan weighs 108 kgs.	- One of the lightest HVLS Fans in the industry thus safer and consumes less power
Control	- Digital Touch Screen Remote Control - One Touch Operation - Fault code diagnosis	- Easy operation - Easy maintenance and upkeep - Minimise mishandling
Optional Accessories	- Mounting Extensions (1 ft to 10 ft) - Extra Wide Beam Pivot Bracket - Multi-Fan Remote (2-4 Fans)	- Suitable for facilities with different heights and structures - Easy control of multiple fans with a single remote
Comfort	- Airfoil blades ensures uniform airflow.	- 2-3 mph breeze created by fan - Decreases perceived temperature by 7-11 degree F - Increases comfort and improves productivity

Product Components

- **Safety**

- Safety disc in the hub provides redundant safety
- Safety cable with mounting bracket
- 4 Numbers of guy wires
- 2 lanyards per blade



- **Blades and Winglets:**

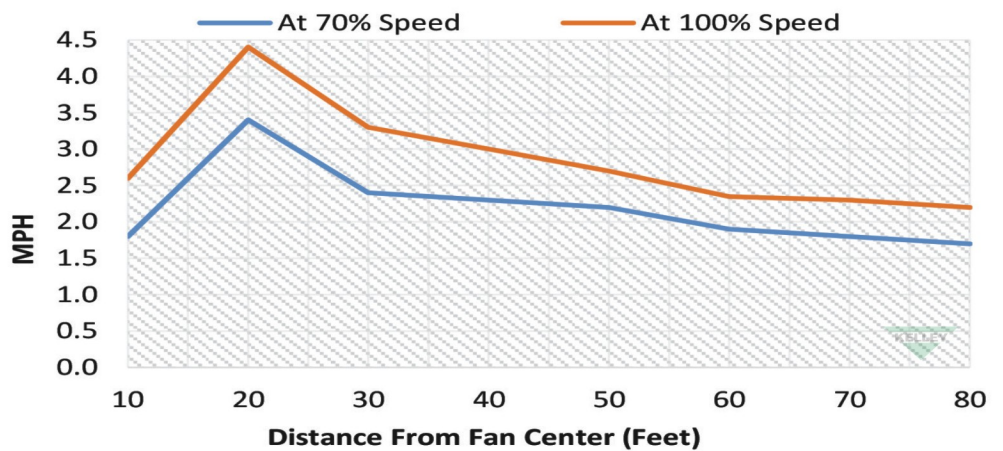
- Extruded aluminium anodized blades
- Vertical support increases rigidity and strength
- Maximizes efficiency of airfoil by reducing induced drag
- Patent-pending blade design optimizes airflow by increasing lift
- Specifically designed for stationary rotary airfoil operating at slow speeds (patent-pending)
- Vortices are generated below the airfoil, directing turbulence away from the trailing blade

- **Frame and Hub Assembly:**

- Aesthetically pleasing frame cover allows for a wider range of applications
- Single axis mount decreases potential fan movement while maintaining low torque transfer
- Mount self levels on pitched sloped roofs for easy installation
- Patent-pending M3 strut design adds strength and rigidity to improve fan performance
- Multi-piece aluminum hub distributes the load across the hub assembly
- Safety Connection System provides redundant safety

- **VFD and Remote Assembly:**

- High Efficiency Variable Frequency Drive (VFD) with In-line fusing and disconnect
- Supplied with 25' of 14 gauge SO cable (pre-wired to motor) from the factory
- Easy integration for networking or integration into fire suppression panels
- Digital touch screen with One-Touch Front or Reverse Operation
- Numerical passcode protection to avoid unauthorised access
- Troubleshooting from ground level with fault codes
- UL Certified



The above graph illustrates the combined average air flow velocity vs radial distance covered at heights 4" to 67" by a 24 Feet - 2 HP- 3 Phase Kelley Industrial HVLS Fan (Under Ideal Test Conditions)

The Kelley and Serco Industrial HVLS Fans features an advanced blade profile which means more lift while the five (5) blade and three (3) blade designs results in less stress to your building. The combination of these engineering discoveries equates to an increase in airflow with decreased energy usage.

Commercial HVLS Fans



An energy-efficient solution that combines exceptional style with best-in-class performance to keep your space cool and comfortable. The C-Class Commercial Fan moves a substantial amount of air, while giving you endless customization options to make it your own. These fans are designed to provide a sleek and stylish design, a low sound dBA level that's so quiet it's like the fan's not even there. With its adaptable and configurable color design options, C-Class is a fan that truly caters to your unique environment covering large area.

KEY FEATURES

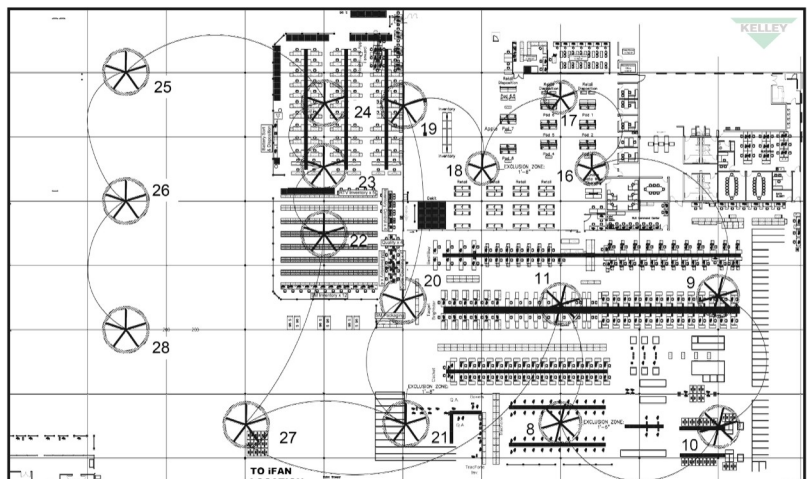
- Reverse Capability
- Fire Shut Down Integration
- Gearless Direct Drive Motor
- Less Than 35 dBA
- ETL to UL507 Certification
- Diameters: 6', 8', 10', 12', 14'

OPTIONAL FEATURES:

- Multi Fan Control
- BACnet (BMS)
- Modbus (BMS)
- 8 different colors available

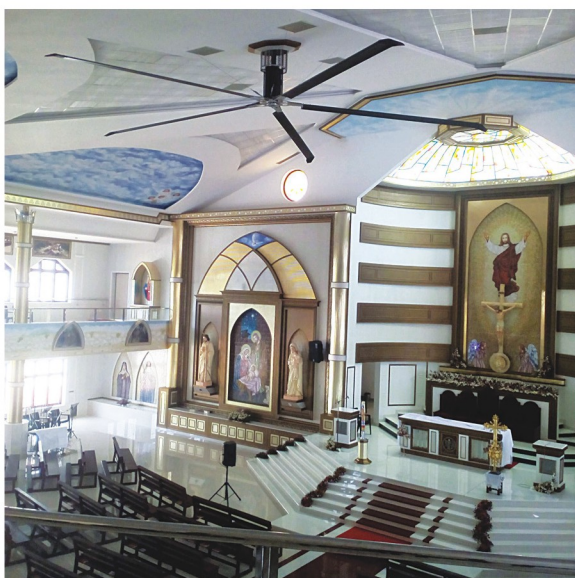


Call Kelley Expert Today



Wide Applications

- Manufacturing
- Hospitals
- Hotels
- Warehouses
- Airports
- Sports Arena
- Retail
- Religious Places
- Restaurants and many more...
- Shopping Malls
- Showrooms



Kelley and Serco : History of Innovation

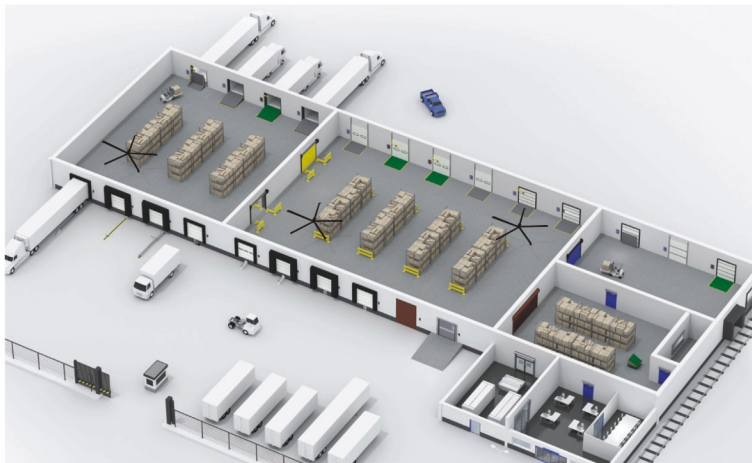
Product innovation and repeatable manufacturing are just some of the core competencies that have made the Kelley and Serco brands, the industry standard for quality and durable Loading Dock Equipment and HVLS fans. Made possible through our significant investment in manufacturing technology, Kelley and Serco have become leaders by not only introducing many industry firsts but by utilizing our capability to design, engineer and manufacture the highest quality products consistently.

Our products are installed in locations on nearly every continent in the world. Today, this product offering extend well beyond Dock Levelers and Dock Doors to include Yard and Dock Management Systems, a full line of energy saving products and HVLS Fans to support a growing global need to move air more efficiently.



“ Kelley and Serco have a unique value proposition that is truly focused on Voice of the Customer (VOC) and total lifetime cost of ownership. Customers are always first in our design considerations and in our effort to innovate. ”

*Michael Eastabrook,
President and Managing Director,
4FrontES, USA*



Kelley Material Handling Equipment India Pvt Ltd.

(Wholly owned subsidiary of 4Front Engineered Solutions, Inc., Dallas, Texas, USA)



506, SSR CORPORATE PARK,
13 / 6, Delhi Mathura Road,
NH-2, Sector – 27 B,
Faridabad – 121003,
Haryana, INDIA.
L: +91 129 2250300
support@kelleyindia.com

www.KelleyIndia.com

North :	CM Suhag	+91 9899118241
East :	Kishanu Banerjee	+91 9899118243
West :	Bhushan Rewatkar	+91 9899118242
South :	Arun Hagaragi	+91 9899118244
Product Support :	Govind Patil	+91 9899118239

